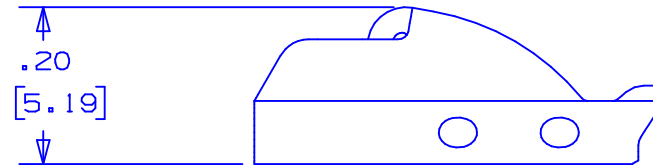
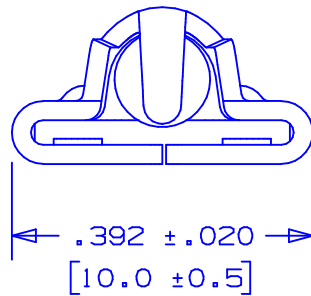
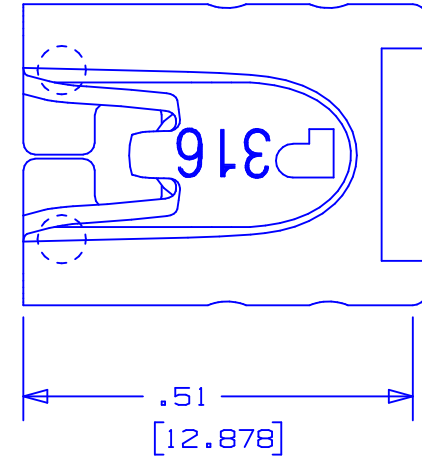


NOTES:


1. TO BE USED WITH PANDUIT METAL BANDING MBH-MR & MBH-TLR.
2. APPLICATION TOOL: GS4MT, ST2MT, PPTMT, ST3MT^(A) OR HTMT.
3. TOOL TENSION SETTING: 4 TO 8 (GS4MT AND PPTMT ONLY)
4. DIMENSIONS IN [] ARE MILLIMETERS.

ⓑ 5. MINIMUM LOOP TENSILE STRENGTH: 250 LBS (1112 N)

6. TOLERANCES: .X = ±.030[.762]
 .XX = ±.020[.508]
 .XXX = ±.010[.254]
 ANGLES = ±2°



S41131_01

01	10/03	BRH	DPN	(A) ADDED ST3MT TO TOOL APPLICATION NOTE	11162	CCH	JJB	 PANDUIT CORP. TINLEY PARK, ILLINOIS METAL TIE HEAD HEAVY PART# MTHH-C316 316 STAINLESS STEEL			
				(B) ADDED MINIMUM LOOP TENSILE STRENGTH NOTE							
00	11/02	JAMB	DPN	RELEASED	10401	CCH	JJB				
REV	DATE	BY	CHK	DESCRIPTION	ECN #	PM	CUST	DRAWN BY	CHK'D	SCALE	DRAWING NO.
								JAMB	DPN	4x	S41131